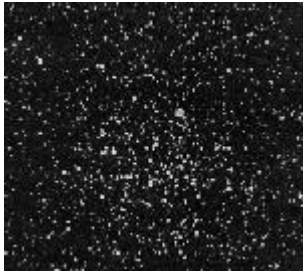


Kitt Peak Nightly Observing Program

Splendors of the Universe on YOUR Night!

Many pictures are links to larger versions.

Click here for the [“Best images of the AOP” Gallery](#) and more information.



M46: An open star cluster containing over 500 stars, lies at a distance of 5,400 lightyears, and is about 30 lightyears across. It contains the remnants of a dead star, sometimes visible as a little grey disk, called NGC 2438.



M42: The Great Orion Nebula. This is a region of star formation about 1,500 ly away. It is 30 ly across and contains enough material to make 10,000 stars the size of our sun.



M65: A spiral galaxy lying about 35 million ly away. With only 50 billion suns, it is smaller than the Milky Way. It is one of three galaxies in a small group.



M66: A spiral galaxy, one of three closely related galaxies (M65 and NGC 3628 are the others). M66 is a stones throw (180,000 lightyears) from M65.



Jupiter is the largest planet in the Solar System, a “gas giant” 11 Earth-diameters across. Its atmosphere contains the Great Red Spot, a long-lived storm larger than Earth. The 4 large Galilean satellites and at least 59 smaller moons orbit Jupiter.



NGC 2438 is the glowing bubble of gas that was cast off by a single star that has died. At a distance of 2,900 light years away it is a foreground object superimposed upon the sparkling star cluster M46.

Kevin Bays

Your Telescope Operator and Guide. Thank you for joining me this evening! See you soon!!

The web page for the program in which you just participated is <http://www.noao.edu/outreach/nop>. Most of the above images were taken as part of the all-night observing program. For more information on this unique experience please visit <http://www.noao.edu/outreach/aop>.

Copyright © 2008 Kitt Peak Visitor Center